

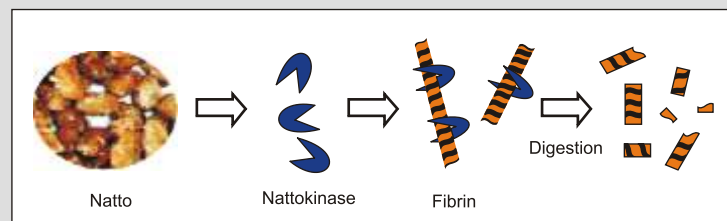


## Nattokinase Enzyme

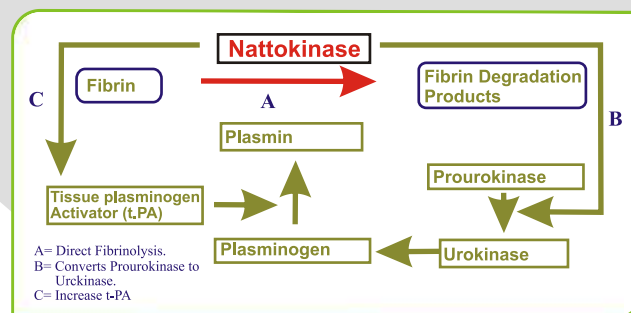
### NATTOLIFE FOR BETTER LIFE

Cardiovascular diseases are the leading cause of death across the world. The functional clotting and blood-flow related problems do steady, silent damage long before obvious disease shows itself. If we can reverse this silent, functional clotting problems, we can offer profound healing tool to patients. This is where the real treasure of this enzyme lies, and allows us to treat vascular disease in a way that puts patients at the forefront of preventive medicine. Nattolife contains Nattokinase enzyme which regulates the body's clotting process by dissolving off excess of fibrin and clearing cholesterol plaque, thus improving circulation and reducing risks of cardiovascular diseases.

Nattokinase is a fibrinolytic agent and is present in the Japanese delicacy called "Natto" consisting of fermented soybeans. Nattokinase was discovered by Dr. Hiroyuki Sumi in 1980.



Nattolife has its action on fibrin and converts fibrin to its degradation product [FDPs]. Nattolife has a unique triple action on fibrin, thus it is 4 times more potent than plasmin (natural fibrinolytic agent of the body).



" In all my years of research as a professor of cardiovascular and pulmonary medicine, natto and nattokinase represent the most exciting new development in the prevention and treatment of cardiovascular related diseases"- Martin Milner, N.D. Of the Center for Natural Medicine in Portland, Oregon, USA.

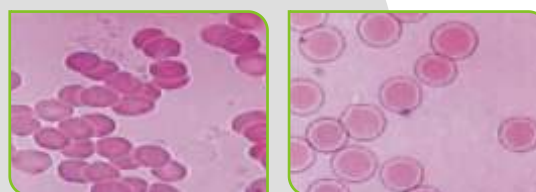
### Nattolife on improving blood circulation:

The human body produces several types of enzymes for making thrombus, but only one main enzyme for breaking it down and dissolving it- plasmin. The properties of Nattokinase closely resemble Plasmin and demonstrate potent thrombolytic action.

In vitro studies clearly show that nattokinase not only actively degrades fibrin, important components of thrombi, but also its actions are longer-lasting than some standard antithrombotic therapies.

It does not hamper with normal clotting process so it is "clotting process normalizer" and owing to its small size it can penetrate well even in smallest microcapillaries and retrieve normal blood flow in just 5 hours.

Nattokinase has shown increased blood mobility and reduced RBC aggregation thus demonstrating improved blood flow.<sup>[3]</sup>



Before

After

### **Nattolife on Deep Vein Thrombosis:**

Nattolife has also demonstrated its effectiveness on deep vein thrombosis. A study on 186 human volunteers showed no signs of thrombosis or edema compared to that observed significantly in the placebo group.<sup>[1]</sup>

### **Nattolife on hypertension :**

Nattokinase has demonstrated effect on normalising blood pressure. It acts as an ACE inhibitor and thus reduces blood pressure. Nattokinase has long been known to reduce blood pressure in spontaneously hypertensive rats.

New evidence is emerging to suggest that Nattokinase may reduce high blood pressure in humans as well, and has been reported to lower systolic and diastolic blood pressure by 11% and 9.7% respectively.<sup>[4]</sup>

### **Nattolife on atherosclerosis:**

Nattolife cuts off the risk of atherosclerosis as it reduces the blood lipid levels, thus it does not allow the deposition of plaque on the walls of blood vessel. The related study demonstrated that Nattokinase reduces the intimal thickening of the blood vessel in rats when administered orally. Thus Nattolife may be used in people at the risk of atherosclerosis.<sup>[2]</sup>

### **Toxicity Study on Nattolife:**

The dose of 2000 mg/kg body weight was administered which was 20000 times that of the intended human dose (3226 times the human equivalent dose). Even such a high dose of Nattolife of 2000 mg/kg body weight did not cause any adverse acute toxicity in Wistar rats when the dose was administered by oral route.

Thus the enzyme demonstrates a confirmed efficacy, with no side effects and with convenience of oral administration as a preventive measure for cardiovascular diseases.<sup>[10]</sup>

*These statements have not been evaluated by the Food and Drug Administration. This product is not intended to diagnose, treat, cure or prevent any disease.*

### **BIBLIOGRAPHY:**

1. M.R. Cesarone et al Prevention of Venous Thrombosis in Long Haul Flights with Flite Tabs: The LONFLIT-FLITE Randomised, controlled Trial.
2. Yasuhiro Suzuki et al Dietary supplementation with fermented soybeans suppresses intimal thickening: Nutrition.2003; 19(3):261-4.
3. Increased blood mobility by Nattolife: The Society of Analytical Biosciences: vol 25, No.4 (2002)
4. Effect of Natto diet on Blood pressure. JTTAS, 1995.
5. Prevent heart attack and stroke with potent enzyme that dissolves deadly blood clots in hours. Health science Institute, March 2002.
6. Focus Newsletter, Allergy Research Group, January 2003.
7. Der-Jinn Wu et al, Lipid lowering effect of nattokinase in patients with primary hypercholesterolemia, 1,2 2009;25:26-30.
8. Ralph E. Holsworth, Jr.D.O. Nattokinase and Cardiovascular Health -Special Report 2002.
9. Sumi et al "Enhancement of the fibrinolytic activity in plasma by oral administration of nattokinase",1990, pg no.139-143, vol.1990.
10. Single dose toxicity study of Nattolife in wistar rats administered through oral route. Laboratory animal research services, study no. 1090.



702/B, Polaris, Off Marol Maroshi Road, Behind Sangeet Plaza,  
Marol, Andheri (East), Mumbai - 400 059. India.  
Tel: +91-22-6772 3000, Fax: 91-22-6725 3399,  
e-mail: info@zytex.com, website: www.zytex.com